

SmarteLoad™ eProgesa Edition

Powerful, Flexible Performance Test Tool

Optimized for eProgesa, Proven in Blood Bank Installations Worldwide

Get the Superior Performance Your Applications and Website Requires!

SmarteLoad eProgesa Edition tests your system's ability to cope with load and stress under any scenario imaginable. Simulate projected usage patterns and ramp load up, up, up...while analyzing potential bottlenecks and optimizing system



performance. Blood Banking is a highly specialized arena and requires the highest level of application performance. SmarteLoad eProgesa Edition ensures you meet and exceed performance goals.

Ease of Use

SmarteLoad eProgesa Edition's user-friendly GUI is easy to learn. Test teams create and run load tests quickly. Rapid implementation immediately improves application performance and customer satisfaction.

SmarteLoad eProgesa Edition uses a navigate-and-record methodology to automatically create a data grid which drives and tracks the test case flow. The grid contains static and dynamic data variables and data types as well as URLs, headers, forms and the type of actions to perform. It parameterizes and automatically correlates dynamic data received from servers upon client requests. Undo specific or all correlation with a click of a button.

Extensible and Flexible

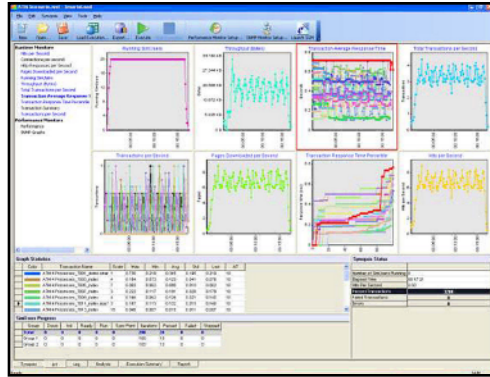
SmarteLoad eProgesa Edition leverages Java Protocol for maximum platform extensibility.

THE DETAILS

SUPPORTED ENVIRONMENTS AND PROTOCOLS

- Web/Internet e-commerce applications
- HTTP/HTTPS, Ajax, HTML, Java Script, PHP, Open Java API*, WinSock, Oracle L360, SOAP and Web Services, SOA

*Open API to plug-in 3rd party protocols



SmarteLoad eProgesa Edition stress tests applications to ensure flawless execution when you need it most.

Open API architecture provides easy integration of custom protocols or existing Java servlet libraries.

JavaScript drives SmarteLoad eProgesa Edition script execution. Control script execution logic and parameterization or correlation. Modify scripts quickly and easily with JavaScript for custom solutions to meet your unique needs.

Don't Interrupt Business

Get remote host Generator Agent recognition, connection and remote agent installation on servers and hosts. The Host Management tool easily and rapidly configures the testing environment without the need for manual installation. There is no need to involve system administrators.

Leverage Existing Work Product

Migrate existing automated functional or load test scripts from SmarteScript or other tools to give you a jump start on performance testing. Less time designing means faster results and improved performance.

Get Results

Simulated actual scenarios are closely tracked measuring real-time transaction responses. Analysis reports and graphs provide accurate, detailed documentation of test results. Create custom reports focused on what matters most to you.

SOLUTION SOFTWARE TOOLS

Control test management and boost test productivity with these powerful additional tools.

SmarteScript™

Powerful, robust, proven automated functional test tool. SmarteScript is easy to learn with no scripting skilled needed – even for complex functions. Ramp-up quickly, making acceptance and deployment easy as well.

SmarteX™

The run-time version of SmarteScript, SmarteX provides the flexibility of running tests created with SmarteScript on secondary systems, boosting testing productivity.

SmarteTime™

The SmarteScript scheduling tool provides precise scheduling of when to run test scripts and on which workstations. It is network and storage aware. Set tests to run overnight, or to avoid planned maintenance.

SmarteQM™

Manage software development project requirements, releases, test cases, issues and tasks in one environment. Take control of project life cycle and synchronize the sometimes separate worlds of development and testing.

Total Test Solution

SmarteSoft offers software tools and professional services to help achieve test success. From Test Life Cycle Management to planning and executing Functional and Performance Testing, SmarteSoft is here to help. Above is information on additional tools to further improve test performance while reducing manpower and equipment requirements, accelerating test schedules, and reducing budget.

TOTAL TEST SOLUTION

Contact info@smartesoft.com or (512) 782-9409. We'll find the best test solution to meet your unique needs.

SmarteLoad eProgesa Edition

Easy to Learn and Implement

- Intuitive Graphical User Interface
- Rapid acceptance

Control and Visibility

- Quickly obtain performance results in reports and graphs
- Export results in many formats including Microsoft Word, Excel, and HTML



SOFTWARE REQUIREMENTS

MINIMUM

Processor: Pentium 4 1.8GHz
Operating System: Windows XP, Vista, and Server 2003/2008
Memory: 1GB minimum
Disk Space: 250MB minimum
Display: 800x600 minimum resolution
Browser: IE 6 or higher

RECOMMENDED

Processor: Intel Core 2 Duo 2GHz or higher
Operating System: Windows XP or later, Server 2003/2008
Memory: 2GB minimum
Disk Space: 500MB minimum (full install)
Display: SXGA (1024x768) or higher resolution
Browser: IE 6 or higher

TOTAL TEST SOLUTION

Contact info@smartersoft.com or
(512) 782-9409. We'll find the best test
solution to meet your unique needs.

Test Solutions Professional Services

Whether you need test experts to handle entire test projects or just need assistance to get the project started, SmarteSoft can help. Contact us at info@smartersoft.com or 512.782.9409. We'll craft a solution that fits your needs.

Foundation Services

Every successful project starts with a solid foundation. Our experts define a Test Plan, design flexible Test Architecture, and an Implementation Plan

Complete Turnkey

Our test experts handle the entire software test project: scoping test architecture, planning, test case design, implementation, execution, reporting and maintenance.

Consulting

A little guidance or a fresh perspective from our test experts can get you back on track.

Training

On-Site, Self-Paced, On-Line Webinars

Rapid Return on Investment

- Learn quickly, test quickly
- Doesn't Interrupt business process
- Leverage existing automated functional tests
- Lower load simulation cost per concurrent user
- Ensure superior customer experience and brand

Extensible, Flexible

- Easily add custom protocols via open API structure
- Migrate functional test scripts to load test

Remote Server / Agent Installation

- Remote host recognition, connection, and installation of network agents

SmarteScript and SmarteX or use of SmarteScript and SmarteX is covered by U.S. Patent No. 7,917,895 B2

©2011 SmarteSoft, Inc. All rights reserved. SmarteSoft, SmarteScript, SmarteQM, SmarteX, SmarteTime, SmarteLoad, and SmarteStudio are trademarks or registered trademarks of SmarteSoft, Inc. All other company, brand and product names are marks of their respective holders.