

## SmarteScript™

### Powerful, Robust, Proven Automated Functional Testing Tool

#### Choose the Best Path to Automated Test Success!

We've spent years perfecting our technology, incorporating our vast experience in best practice methodology. With SmarteSoft Solutions, you manage the test life cycle, enhance schedule predictability, and improve the quality and performance of delivered products.



#### Fast, Reliable Testing – With Great ROI

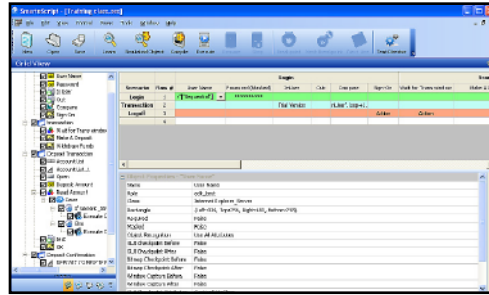
SmarteScript is easy to learn, with no coding skills required – even for complex functions. Your team will ramp-up quickly making acceptance and deployment easy as well.

Reduce test timelines and improve the quality and performance of delivered products while staying within budget.

#### Flexible...and Fast

SmarteScript's Learn and Interact function intuitively learns windows and objects used in an application. Create test skeletons for each business process, then develop test cases quickly and easily. Complex, data-driven scripts can be auto-generated in minutes.

Unlike Record and Playback methods, Learn and Interact is fast and highly flexible. Respond to software changes with quick test case revisions instead of creating the test script from scratch. Save time, save money, reach your testing goal.



SmarteScript's Graphical User Interface is easy to use. No programming is needed – even for complex functions.

#### Seamless Documentation

SmarteScript automatically creates documentation. Get a high-level view of software reliability while also capturing details on test failure and break-points to spin back to developers.

#### Ease of Use

Grid visualization controls how data and objects interact in the test process. A data grid automatically tracks and drives test cases. The data grid contains information on all data types and objects that will be tested as well as the type of actions to be performed. Quickly modify the grid content to revise test case executables.

#### Fast, Easy Test Maintenance

As software under test changes, automatically update all affected test scripts in the test bed with Global Change Manager. Also automatically identifies changes made since test was last run alerting that maintenance is required. Don't waste time on flawed regression testing.

#### Flexibility to Test Variable Data

Acquire variable data from spreadsheets, for example, to test any number of tasks within the product under test. SmarteScript's flexibility provides many ways to acquire variable data at run-time or before. We recently documented 7 methods to interact with variable data using SmarteScript. We know there are more.

### SOLUTION SOFTWARE TOOLS

Control test management and boost test productivity with these powerful additional tools.

#### SmarteQM™

Manage project requirements, releases, test cases, issues and tasks in one environment. Take control of project life cycle and synchronize the sometimes separate worlds of development and testing.

#### SmarteX™

The run-time version of SmarteScript, SmarteX provides the flexibility of running tests created with SmarteScript on secondary systems, boosting testing productivity.

#### SmarteTime™

The SmarteScript scheduling tool provides precise scheduling of when to run test scripts and on which workstations. It is network and storage aware. Set tests to run overnight, or to avoid planned maintenance.

#### SmarteLoad™

Verify your system's ability to cope with load and stress under any scenario. Simulate usage patterns and ramp load up, analyzing bottlenecks and optimizing performance.

#### Total Test Solution

SmarteSoft offers software tools and professional services to help achieve test success. From Test Life Cycle Management to planning and executing Functional and Performance Testing, SmarteSoft is here to help.

In the box above is information on additional tools to further improve your test performance while reducing manpower and equipment requirements, accelerating test schedules, and reducing budget.

### THE DETAILS

#### SUPPORTED ENVIRONMENTS, PLATFORMS AND APPLICATIONS

- Web, Desktop, Mobile, Point-of-Sale, Embedded & Mainframe environments
- All native Microsoft Windows applications, .NET, Java and more

### TOTAL TEST SOLUTION

Contact [info@smartesoft.com](mailto:info@smartesoft.com) or (512) 782-9409. We'll find the best test solution to meet your unique needs.

## SmarteScript

### Easy to Learn and Implement

- Easy to deploy throughout your organization
- User-friendly GUI-based
- No programming skills required, even for complex functions
- Easy for non-developers to use

### Rapid Return on Investment

- Learn quickly
- Test quickly
- Deploy in less time
- Improve quality of product, reduce test timelines, resources needed, and test costs

### Simple, Fast Maintenance

- Automated updates to tests and documentation when your application changes
- Suitable for Agile or other continuous improvement environments

### Self-Documenting

- Automatically generates test cases
- Automatically tracks changes

### Integration

- Fully integrates with SmarteQM™ software test life cycle management tool



## Test Solutions Professional Services

Whether you need test experts to handle entire testing project or just need assistance to get the project started SmarteSoft can help. Contact us at [info@smartersoft.com](mailto:info@smartersoft.com) or 512.782.9409. We'll craft a solution that fits your needs.

### Foundation Services

Every successful project starts with a solid foundation. Our experts define a Test Plan, design flexible Test Architecture, and an Implementation Plan

### Complete Turnkey

Our test experts handle the entire software test project: scoping test architecture, planning, test case design, implementation, execution, reporting and maintenance.

### Consulting

A little guidance or a fresh perspective from our test experts can get you back on track.

### Training

On-Site, Self-Paced, On-Line Webinars

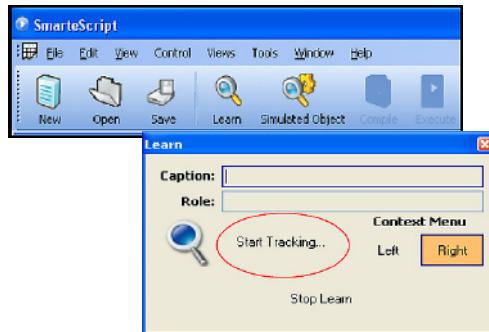
## SOFTWARE REQUIREMENTS

### MINIMUM

Processor: Pentium 4 1.8GHz  
 Operating System: Windows XP, Vista, and Server 2003/2008  
 Memory: 1GB minimum  
 Disk Space: 250MB minimum  
 Display: 800x600 minimum resolution  
 Browser: IE 6 or higher

### RECOMMENDED

Processor: Intel Core 2 Duo 2GHz or higher  
 Operating System: Windows XP or later, Server 2003/2008  
 Memory: 2GB minimum  
 Disk Space: 500MB minimum (full install)  
 Display: SXGA (1024x768) or higher resolution  
 Browser: IE 6 or higher



*SmarteScript's step-by-step click-through process is easy for non-programmers to learn and use. Your test team will be productive in a remarkably short time.*

## TOTAL TEST SOLUTION

Contact [info@smartersoft.com](mailto:info@smartersoft.com) or (512) 782-9409. We'll find the best test solution to meet your unique needs.

SmarteScript and SmarteX or use of SmarteScript and SmarteX is covered by U.S. Patent No. 7,917,895 B2

©2011 SmarteSoft, Inc. All rights reserved. SmarteSoft, SmarteScript, SmarteQM, SmarteX, SmarteTime, SmarteLoad, and SmarteStudio are trademarks or registered trademarks of SmarteSoft, Inc. All other company, brand and product names are marks of their respective holders.